

ARB® UTILITY MANAGEMENT SYSTEMS™



N_SIGHT™ R900®

N_SIGHT™ R900® HOST SOFTWARE

Offering powerful consumption data analysis through intuitive graphical interfaces, N_SIGHT™ R900® host software's light footprint application provides support for a wide variety of functions. N_SIGHT R900 has been enhanced to offer a completely flexible solution – a single software package that allows migration from mobile AMR to fixed network AMI. All without replacing software!

Support for handheld, mobile, and fixed network meter reading

Seamless migration within existing R900® technology



Unattended operation

No need to hire a database administrator with software that runs on its own

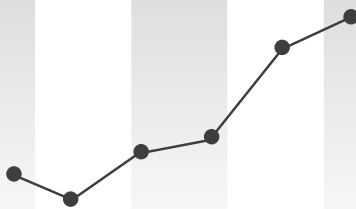


System health screen

System-wide views of MIUs, collector status, and other information is available at a glance

Ease of use

N_SIGHT R900 intuitive user interface design is easy to install and use



Standard and customizable reporting

Management reports provide proactive means to settle customer disputes and aid water conservation

Virtual disconnect



Mark an account "disconnected" or inactive; any subsequent usage is reported and flags unauthorized consumption



Automatic web updates

Latest version is always available to the user for convenient installation at any time



Intuitive graphical representation of consumption information

Crucial information including reverse flow events, continuous leaks, and collector status is displayed in an easy-to-view dashboard



Data logging graphing and reporting specific to E-Coder®

Ability to extract 96 days of hourly consumption data, along with easy and intuitive configuration, generation, and analysis (including hourly graphs of leak and reverse flow events)

FEATURES & BENEFITS

FEATURES

BENEFITS

Integrated Meter Reading Processes

- Migrate from mobile AMR to fixed network AMI
- Eliminate stranded assets

Data Logging

- Identify the duration of leak events to assist with addressing high bill complaints
- Help reduce Non-Revenue Water (NRW)

System Health Analysis

- Access mission-critical system status and performance information quickly

Unattended Operations

- Load and unload handhelds with limited user intervention
- Schedule reports to run automatically for viewing at any time

Automatic Web Updates

- Receive notification via the application when new updates are available
- Always have the latest version of software

Intuitive Graphical User Interface

- Minimal training required for utilization of the application
- Easily view and analyze customer consumption information

Standard and Customizable Reporting

- Address key utility concerns with standard reports
- Customize reports to provide the specific data elements required for your utility

System Security

- Use encrypted database to ensure data is secure from software hackers
- Implement active directory login processes to align utility login requirements with access to the N_SIGHT application

System Backup

- Store up to seven (7) consecutive days of backup files in the event of a catastrophic data loss
- Configure backup events to run manually or each time you exit the application

Many utilities are migrating to fixed network technology to gain the benefits of the advanced data stream. Even though many utilities would like to migrate in large scales, Neptune understands that in the economy that we are faced with today, many utilities cannot afford to strand assets that are still operational. To assist utilities in managing both mobile and fixed network technology, Neptune offers the N_SIGHT R900 software application. The N_SIGHT R900 software, which utilizes the R900® radio frequency meter interface units, allows customers to more fully utilize the data received from mobile and fixed network technology all in one software package.

N_SIGHT R900 supports Neptune’s handheld, mobile, and fixed network collection hardware devices. It also integrates with AMI technology for customers running a hybrid system.

Fixed Network Support & Analysis

N_SIGHT R900 provides the customer with the ability to gather and analyze the information that has been processed by the R900® Gateway v3 fixed network data collector.

Crucial information such as major reverse flow events, continuous leaks, and collector status indicators are displayed in an easy-to-view dashboard. A graphical display of customer usage profiling in monthly, daily, and hourly intervals will assist customer service representatives to better handle high water bill complaints. This feature supports the migration path from mobile meter reading to fixed network technology without the need to change software applications.

Data Logging Functionality

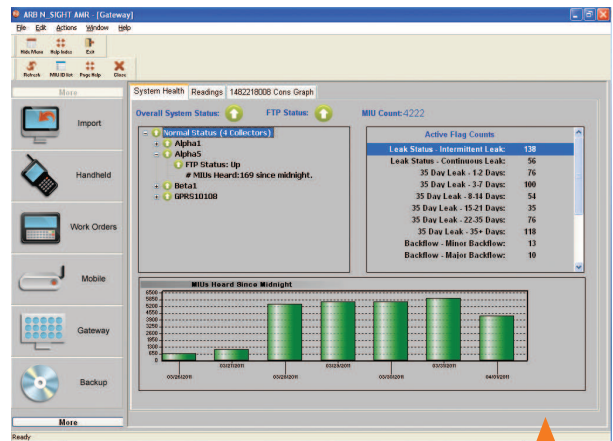
The E-Coder®R900/™ provides high resolution, 8-digit remote meter reading and data logging along with value-added features such as leak, tamper, and reverse flow detection. One of the

most popular features of this device is its ability to extract 96 days of hourly consumption data. The data logging functionality provides up-to-the hour consumption data. Consumption is recorded as it happens, every hour on the hour, helping to identify existing or potential issues. Graphical charts can be generated within N_SIGHT R900 to show a possible leak, tamper, or reverse flow event. The data logging information provided within the N_SIGHT R900 application makes configuring, generating, and analyzing consumption information easier and more intuitive.

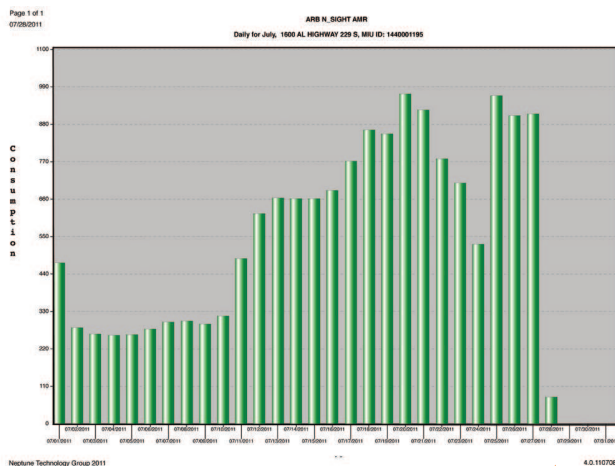
Data Security

With the advancement of technology and the evolution of large volumes of data, many IT departments have major concerns with securing the utility’s data. Neptune understands these concerns and provides data encryption along with a secure login process and active directory integration to assist with these concerns.

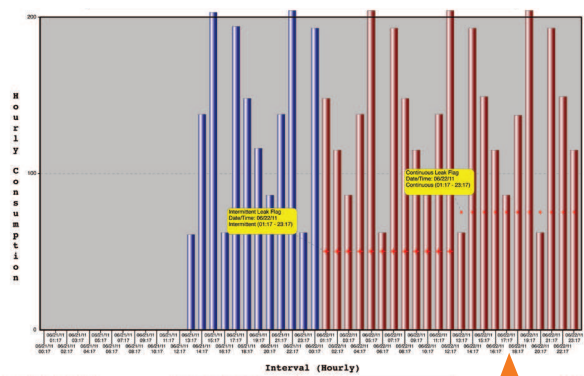
Neptune understands that the needs of utilities change, and our technology evolves to meet those new needs. Neptune’s ultimate goal is to provide solutions that meet your needs and make the day-to-day tasks a little easier.



R900® Gateway system health screen.



Graph represents R900® Gateway daily readings.



Graph represents E-Coder®R900/™ data logging hourly readings.

SERVER SPECIFICATIONS

The minimum recommendation for the N_SIGHT R900 server computer installation includes:

- Windows Server 2008®/Windows Server 2003®
- Intel Pentium 4 3.0 gigahertz (GHz) or compatible processor or higher, depending on the system configuration
- 2 gigabytes (GB) RAM (4 GB RAM or higher recommended), depending on the system configuration
- For dial-up: 56 kilobits per second (Kbps) or higher-speed modem
- For networking: Network adapter appropriate for the type of local-area, wide-area, wireless, or home network to be connected to, and access to an appropriate network infrastructure; access to third-party networks may require additional charges
- CD-ROM drive
- Video graphics adapter capable of 256 colors and 1024 X 768 pixels
- 10 GB available hard disk space (without R900 Gateways) or 250 GB available hard disk space (with R900 Gateways)
- Neptune recommends using a RAID configuration for the N_SIGHT server installation

PC SPECIFICATIONS

The minimum hardware requirements for the N_SIGHT R900 client computer include:

- Windows XP® Professional/Windows® Vista Business/Windows 7 Professional
- Intel Pentium 4 3.0-GHz processor or faster
- Minimum 1 GB RAM (2 GB RAM or higher recommended), depending on the system configuration
- Minimum 5 GB of available space on the hard disk
- CD-ROM or DVD-ROM drive
- Keyboard and a Microsoft Mouse or other compatible pointing device
- Video adapter and monitor with Super VGA (1024 X 768) or higher resolution

R900® MIGRATION PATHS

MOBILE

- Feet off the streets
- Monthly billing
- Leak, tamper, reverse flow detection
- Meter location mapping

HYBRID: MOBILE & FIXED

- Daily meter readings/alerts
- Off-cycle reads
- Keep existing assets
- AMR as needed for fewer truck rolls

FULL FIXED



- Easily add R900® Gateways as needed
- Timelier consumption data
- Daily leak, tamper, reverse flow detection
- STORE, ANALYZE, and INFORM with N_SIGHT™ IQ™

ALL PATHS SUPPORTED BY

N_SIGHT™ R900® HOST SOFTWARE

Neptune Technology Group Inc.
 1600 Alabama Highway 229
 Tallahassee, AL 36078
 USA
 Tel: (800) 633-8754
 Fax: (334) 283-7293

Neptune Technology Group (Canada) Ltd.
 7275 West Credit Avenue
 Mississauga, Ontario
 L5N 5M9
 Canada
 Tel: (905) 858-4211
 Fax: (905) 858-0428

Neptune Technology Group Inc.
 Ejército Nacional No. 418
 Piso 12, Desp. 1201-1202
 Col. Chapultepec Morales
 Delegación Miguel Hidalgo
 11570 México, Distrito Federal
 Tel: (525) 55203 5294 / (525) 55203 5708
 Fax: (525) 55203 6503



neptunetg.com