

Introducing: KROHNE WaterFlux 3070

- ☉ Neptune is partnering with KROHNE U.S.A to resell an E-Coder® output capable KROHNE WaterFlux 3070 that can be used for billing in potable water applications. The meter will interface with all of Neptune's standard AMR/AMI offerings using E-Coder 8-digit protocol. This meter is appropriate for potable water applications that might have excessive usage, more aggressive water, or be located in a confined hard to reach space.
- ☉ Electromagnetic flow meter
- ☉ No moving parts
- ☉ Available 2" thru 24"
- ☉ E-Coder protocol for AMR/AMI applications
- ☉ Water applications ONLY!



WaterFlux 3070: What's Unique?

Rectangular Cross Section:

- ② 2 Inch thru 12 Inch sizes
- ② No upstream straight pipe requirement
- ② Energy savings in measurement sampling
- ② 8-10 year battery life

Reference Electrode:

- ② Grounding rings not required

IP68 Register Head:

- ② Suitable for pit applications
- ② No access required to connect MIUs
- ② Field replaceable battery

Plug and Play Connection:

- ② IP68 connector on register
- ② Mating connector on MIU
- ② KROHNE "unique" variant of R900® and R450™



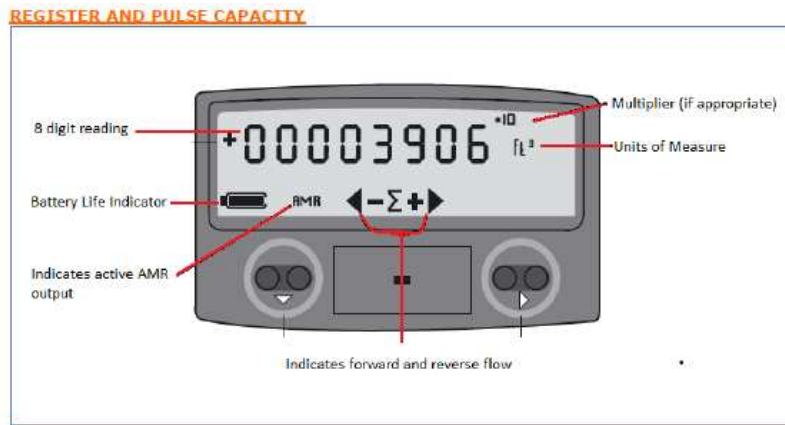
WaterFlux 3070: AMR/AMI Connectivity

Plug and Play Connection:

- ① IP68 connector on register
- ① Mating connector on MIU
- ① KROHNE “unique” variant of R900® and R450™

Enhanced R900 provides:

- ① Leak, backflow, days of no flow flags
- ① Data logging



TECHNICAL SPECIFICATIONS

Technical performance specifications for the WaterFlux 3070.

Pipe Sizes	2", 3", 4", 6", 8", 10", 12", 16", 20", 24"		
Flanges	ANSI 150 lb.		
Pressure	Sizes 2"-8": 230 PSI Sizes 10"-24": 150 PSI		
Temperature	Operating	+15°F to +149°F (-10°C to +65°C)	
	Storage	-40°F to +158°F (-40°C to +70°C)	
Accuracy	Size (inches)	Low Flow (>95%) GPM	Normal Operating (100 +/- 1.5%) GPM
	2	0.4	1.2 to 320
	3	0.7	2.5 to 720
	4	1.3	5 to 1,250
	6	3	11 to 2,850
	8	5	19 to 5,100
	10	8	31 to 8,000
	12	12	44.5 to 11,500
	16	65	237 to 20,500
20	101	370 to 32,100	
24	105	385 to 33,400	

Materials	Body	Polyurethane-coated Carbon Steel	
	Liner	Rilsan [®]	
	Electronics Housing	IP68 Polycarbonate	
	Electrodes	Hastelloy C22 (optional) or 304 Stainless Steel (standard).	
Display		Rate	Total
	Digits	8	8
	Units	Gallons/Minute	Gallons
		Liters/Minute	Cubic Meters
		Gallons/Minute	Cubic Feet
		Gallons/Minute	Imperial Gallons
Power	Battery	2 D-Cell Lithium	
	External (2050 Model)	120 VAC (Not available on WaterFlux 3070)	
Output	Signal	Pulse Output Standard	
	Pulse Rate	Size and Unit Dependent	
	4-20 mA	Optiflux 2050 Model Only*	
	Encoder	E-Coder 8-digit Protocol Only	
Certifications	NSF 61	All Models	
	IP 68	All Models	

Meter Size	Laying Length (inches)
2	7.87
3	7.87
4	9.84
6	11.81
8	13.78
10	15.75
12	19.7
16	31.5
20	31.5
24	31.5